

# USB - PS/2 Scroller Mini Mouse

Notebook Computer  
Mobile Scroller Mini Mouse



**TARGUS**  
A TRADITION OF EXCELLENCE

User's Guide

## INTRODUCTION

Congratulations on your purchase of the Targus USB - PS/2 Scroller Mini Mouse! It is a state-of-the-art scrolling device, specially designed for the mobile warrior. The scroller mini mouse is perfect for screen browsing while on the Internet and when using Windows® applications including Microsoft® Office 97. Its innovative and ergonomic shape is more comfortable and gives you better control than a notebook pointing device. It is compatible with all notebook computers that have either a USB port or a PS/2 port.

This user's guide provides descriptions of the scroller mini mouse features, and gives instructions for connecting the mouse, installing the software, assigning functions to the mouse buttons, and cleaning the mouse.

### Contents

- ❖ One Targus USB - PS/2 Scroller Mini Mouse
- ❖ One PS/2 Adapter
- ❖ This user's guide
- ❖ One driver diskette (Windows 95, Windows 98 and Windows NT® 4.0 only)

### System Requirements: USB

- ❖ Operating system: Windows 98, Windows 2000, or Macintosh® OS Version 8.6 or greater
- ❖ One USB v. 1.1 Compliant Port

### System Requirements: PS/2

- ❖ Operating system: Windows 95, Windows 98, Windows NT 4.0 or Windows 2000
- ❖ One PS/2 port

## CONNECTING THE SCROLLER MINI MOUSE

The scroller mini mouse has the option of connecting through a USB port, or through a PS/2 port via the PS/2 Adapter. Depending on your computer's operating system, it may recognize the mouse and allow Plug and Play installation. If the operating system does not recognize the mouse, you need to set it up.

### **USB Connection with Windows 98 or Windows 2000**

Plug the USB connector into the computer's USB port. The computer detects the scroller mini mouse immediately. Follow the screen prompts until installation is complete. Now you are ready to install the software.

*Note: USB connection is not supported by Windows 3.1x, Windows 95, or Windows NT 4.0.*

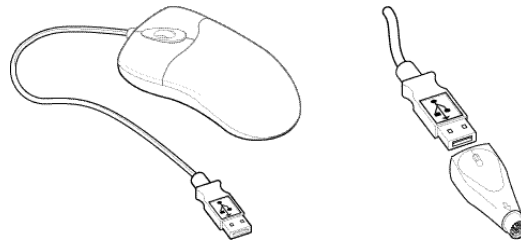


Figure 1. USB-PS/2 Scroller Mini Mouse and PS/2 Adapter

### **USB Connection with a Macintosh Computer**

The Targus USB - PS/2 Scroller Mini Mouse's use is restricted with a Macintosh computer. Macintosh supports only a one-button mouse.

### **PS/2 Connection with Windows 95, 98, NT 4.0, or 2000**

Shut down Windows and turn off the computer. Disconnect the existing mouse, if any. Connect the PS/2 Adapter to the USB connector of the mouse. Plug the PS/2 Adapter into the computer's PS/2 port. Turn on the power. When Windows restarts, its software drivers will enable only the standard scrolling features.

***Warning: Never point the optical sensor toward the face, particularly the eyes.***

***Do not use the optical mouse on a surface which is made of glass, mirror, iron, or black velvet. The optical sensor performs best on surfaces with detail to track. It may have difficulty tracking on repetitive patterns, e.g. printed photographs from magazines.***

## INSTALLING THE SOFTWARE

*Note: The USB - PS/2 Scroller Mini Mouse is automatically detected and enabled with Windows NT and Windows 2000; therefore software installation is not required.*

- 1 Insert the scroller mini mouse software diskette into drive A or B.
- 2 Open the Start menu (**Ctrl** plus **Esc**), and select **Run**.
- 3 Type **A:Setup.exe** (or **B:Setup.exe**) in the command line.
- 4 Click **OK**.
- 5 Follow the screen prompts until installation is complete.
- 6 **Restart** the computer.
- 7 Open the **Start** menu and select **Settings**.
- 8 Select **Control Panel** and double-click the mouse icon.

The Mouse Properties window appears. Across the top of this menu are the categories of features provided. You can set and reset these features to suit your needs.

## USING THE MOUSE

*Note: The enhanced features described in the following sections are not available with Windows NT or Windows 2000. For future enhancements, visit our Web site at [www.targus.com](http://www.targus.com).*

You can assign frequently used mouse and keyboard functions to the mouse buttons with the Button Assignment feature. Microsoft Office 97 is supported with a new one-step zoom feature.

### Factory Settings

Some functions performed by the mouse buttons, scroller wheel, and scroller button are preassigned at the factory.

|                 |   |
|-----------------|---|
| Screen scroller | Moves the cursor when you roll the wheel                    |
| Scroller button | No factory setting  |
| Left button     | Primary button which provides click, double-click, and drag |
| Right button    | Secondary button with no factory setting                    |

Horizontal scrolling      Moves the cursor along the horizontal scroll bar when you press the Shift key while turning the wheel in the direction you want it to move

## Mouse Properties

The Mouse Properties window has several tabs from which you can choose options. These options enable you to control cursor movement and make button assignments that can eliminate as much as 30% of your mouse movement.

The settings for these features are divided among seven different tabs pictured across the top of the Mouse Properties window. They are described in detail on the following pages.

### Magic tab:



**Browsing speed:** adjust the speed at which you surf the Internet or browse Windows documents.



**Browsing direction:** move the roller forward to browse toward the top of the document, or back to browse toward the end of the document.

### Pointers tab:

Click this tab to choose the appearance of the mouse pointer.

### Cursor tab:



**Button find:** automatically position the cursor on the default (usually OK) button whenever a dialog box appears on your screen.



**Trails:** makes it easier to find the cursor when you are using an LCD screen. This option can be used only if your screen supports this.



**Loop:** when you move the cursor to the bottom (or top) of the screen, it automatically wraps to the top (or bottom) of the screen.

**Action tab:**



**Mouse speed:** adjust the speed at which the cursor moves across the screen.



**Double-click speed:** adjust the double-click speed of the mouse button.



**Button Swap:** assign the right button to be the primary mouse button for left-handed use, or revert to the factory setting.

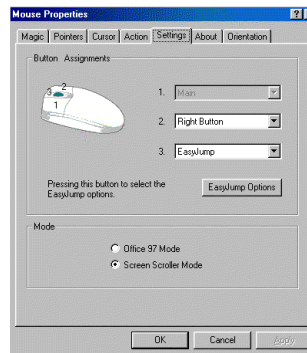


Figure 2. Mouse Properties Window

**Settings tab:**

**Button Assignments:** You can assign the buttons on the mouse to perform frequent operations or special functions such as Auto-panning, EasyJump, and Zoom. To assign a function to a mouse button, click **Button Assignments**. An extensive list of functions appears in a drop-down menu. There is a drop-down menu for each button: 1, 2, and 3.

**EasyJump Options:** Click this button to assign a mouse button to EasyJump. EasyJump provides access to the eight functions pictured in Figure 3. Click the mouse button assigned to EasyJump to quickly perform any of the EasyJump functions:

|            |   |
|------------|---|
| Close AP   | Close the application you are using.          |
| Horizontal | Move the cursor to the horizontal scroll bar. |
| Vertical   | Move the cursor to the vertical scroll bar.   |

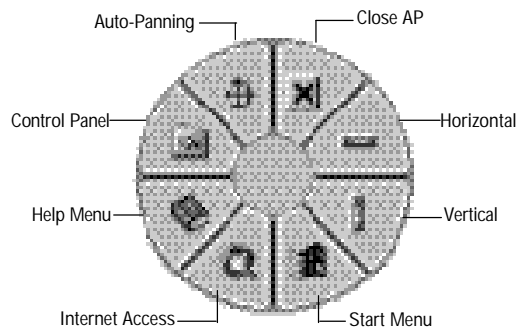


Figure 3. EasyJump Options

|                 |   |
|-----------------|---|
| Start Menu      | Activate the Windows Start menu.                        |
| Internet Access | Open the Browser to access the Internet.                |
| Help Menu       | Open the Windows Help menu.                             |
| Control Panel   | Open the Mouse Properties window.                       |
| Auto-Panning    | Move the document in the direction you move the cursor. |

**Settings Tab (continued):**

**Office 97 Mode:** Support for Microsoft Office 97 features includes zoom, scrolling, and Auto-scrolling. In this mode, the mouse functions similarly to Microsoft's IntelliMouse.

**Screen Scroller Mode:** Supports all applications that use scroll bars, with zoom, Auto-panning, and scrolling functions.

**About Tab:**

Click this tab to display general information about the Targus USB-PS/2 Scroller Mini Mouse software.

**Orientation Tab:**

**Orientation setup:** This feature is specifically designed to change the position of a portable trackball.

**Additional Features**

There are additional features provided with the Targus USB - PS/2 Scroller Mini Mouse. The Switch Applications feature, the Zoom In/Out feature, and Auto-Panning enable you to perform frequently used functions with very little mouse movement.

|                     |   |
|---------------------|---|
| Switch Applications | Switch between two open applications without moving the mouse. After setting either the secondary button or the screen scroller button to Switch Applications from the Mouse Properties window, click the chosen button to switch back and forth between the two open applications. |
| Zoom In/Out         | For Microsoft Office 97 and Internet Explorer 4.01 applications, press the mouse button you assigned to Ctrl and roll the mini mouse scroller wheel forward to enlarge the document window. Roll it backward to decrease the window size.   |
| Auto-Panning        | Once EasyJump is assigned to a mouse button, pressing that button presents the the option of choosing Auto-Panning (or any of the other EasyJump functions). The Auto-Panning function enables you to move the document in the direction you move the cursor.                       |
| Quick Access        | Double-click the icon in the taskbar and the Mouse Properties window opens. To close the scroller mini mouse software, right-click the icon in the taskbar and select <b>Close</b> .  |
| Uninstall           | To remove the software driver from your hard disk, click the <b>Start</b> menu, select <b>Programs</b> , select the scroller mini mouse driver, and click <b>Uninstall</b> .  |



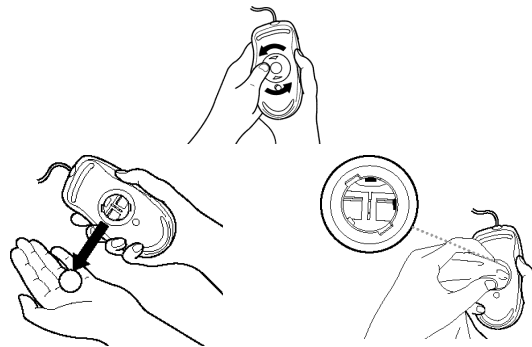


Figure 4. Removing and cleaning the mouse ball

### Mouse Maintenance

The scroller mini mouse may collect dust and dirt that can interfere with its operation. You can avoid potential problems by keeping your work area clean and free from dust. Whenever the cursor movement becomes abnormal, follow the steps that correspond to the type of mouse you have:

To clean the scroller wheel and mouse ball:

- 1 Unplug the USB connector from the computer, or if you are using the PS/2 Adapter, turn off the computer.
- 2 Turn the mouse upside down and remove the mouse ball retainer by turning it counter-clockwise until it becomes loose.
- 3 Remove the retainer and the mouse ball.
- 4 Dampen a lint-free cloth or cotton swab with rubbing alcohol to clean the surface of the mouse ball.
- 5 Dampen a cotton swab with rubbing alcohol to clean the two black rollers inside the bottom of the mouse.
- 6 Replace the mouse ball and retainer. Turn the retainer clockwise until it is tightly in place.

- 7 Use adhesive tape to remove any dust or lint from around the scroller wheel.
- 8 Dampen a lint-free cloth or cotton swab with rubbing alcohol. Wipe the surface of wheel clean by wiping across it from side to side.
- 9 Dampen another lint-free cloth with mild soap and water and clean the outer surface of the mouse.
- 10 **Restart** the computer and begin using the mouse.

To clean the optical sensor:

- 1 Turn off the computer if you are using the PS/2 adapter, or unplug the mouse if you are using the USB port.
- 2 Dampen a cotton swab with mild soap and water.
- 3 Gently wipe the optical sensor clean. Avoid scratching the surface of the sensor.
- 4 Plug the USB connector into the USB port, or **Restart** the computer if you are using the PS/2 adapter, and begin using the mouse.

*Caution: When using a computer mouse or keyboard, you may experience occasional discomfort in your hands, arms, shoulders, neck, or other part of your body. If you experience symptoms such as persistent or recurring discomfort, pain, throbbing, aching, tingling, numbness, burning sensation, or stiffness, do not ignore these symptoms. See a qualified health professional promptly. There are many guidelines available for healthy computing. It is recommended that you take frequent breaks from continuous computing. If you have questions about how your computer activities may be related to any of these discomforts, seek the advice of a qualified health professional. Targus is not responsible for any disorders or injuries associated with computing activities.*

## **TECHNICAL SUPPORT**

In the unlikely event that you encounter problems with your Targus USB - PS/2 Scroller Mini Mouse, please use our Web site to contact our support group through email. Or, call Technical Support. Our knowledgeable staff is available to answer your technical questions Monday through Friday, 8:00 A.M. until 8:00 P.M. Eastern time.

Telephone: 800-283-6325 (Toll Free)  
Email: TechSupport@targus.com  
Web site: www.targus.com

## **WARRANTY**

Targus warrants this product to be free from defects in material and workmanship for one year. If your Targus accessory is found to be defective within that time, Targus will repair or replace it. This warranty does not cover damage from everyday wear and tear, or from transportation by a common carrier.

Under no conditions is Targus liable for loss of, or damage to, a computer; nor loss of, or damage to, programs, records, or data; nor any consequential or incidental damages, even if Targus has been informed of their possibility.

Warranty registration at:  
[http://www.targus.com/product\\_registration.asp](http://www.targus.com/product_registration.asp)

Microsoft, Windows 95, Windows 98, Windows NT, and Windows 2000 are registered trademarks of Microsoft Corporation. Macintosh is a registered trademark of Apple Computer, Inc. PS/2 is a trademark of International Business Machines Corporation.



*The Leading Global Supplier of Portable Solutions*  
Visit our Web site at: [www.targus.com](http://www.targus.com)

NEW YORK • LOS ANGELES • TORONTO • TOKYO • HONG KONG  
SINGAPORE • SYDNEY • LONDON • PARIS • BRUSSELS • HANNOVER

Features and specifications are subject to change without notice. ©2000 Targus Corp.

400-0002-001